

## Highlights of First Quarter 2016

June 16, 2016

### Population Growth

Ontario's population reached 13,920,499 on April 1, 2016, with an increase of 46,566 people in the first quarter of 2016. This compares to an increase of 16,961 in the same quarter of the previous year.

Population Growth, Ontario, 1 <sup>st</sup> Quarter, 2016	
(Thousands)	
Population, January 1, 2016	13,873.9
Plus Births	34.4
Minus Deaths	28.2
Plus Immigrants	31.9
Minus Emigrants*	5.2
Plus Net Change in Non-Permanent Residents	12.7
Plus Interprovincial Arrivals	16.6
Minus Interprovincial Departures	15.5
<b>Population, April 1, 2016</b>	<b>13,920.5</b>

\* Emigrants plus net change in temporary emigrants minus returning Canadians.  
Source: Statistics Canada.

### Births and Deaths

Births increased by 1.2% and deaths increased by 3.4%, from the same quarter of 2015.

Natural increase (births minus deaths) was 6,108 in the quarter, down from 6,632 in the same quarter of 2015.

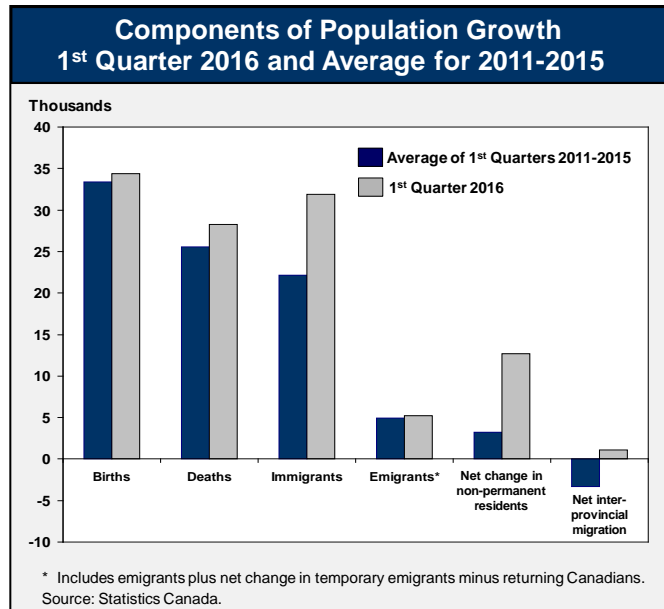
### International Migration

Immigration to Ontario was 31,913 in the quarter, up 61.4% from the same quarter of the previous year. Ontario received 37.0% of all immigrants to Canada in the quarter, down from 38.7% in the same quarter of 2015.

There were 5,216 emigrants from Ontario in the quarter, similar to the same quarter of the previous year. Ontario accounted for 41.2% of all emigration from Canada in the quarter.

The number of non-permanent residents in Ontario (NPRs – i.e. foreign students, visa workers, refugee claimants) increased by 12,660 to 331,325 in the first quarter.

In summary, there was a net international migration gain of 39,357 in the first quarter, up from a net gain of 13,555 in the same quarter of 2015.



### Interprovincial Migration

In the first quarter of 2015, Ontario had a net inflow of 1,101 people from other provinces and territories compared to a net outflow of 3,226 people in the same quarter of 2015. Ontario experienced net gains in its exchanges with eight of the 12 other provinces and territories, with the largest net gains from Quebec (773) and Alberta (664). Ontario's largest net outflows were with British Columbia (-1,130) and the Northwest Territories (-39). Over the last 12 months, Ontario's total net interprovincial migration gain was 1,247 compared to a net loss of 13,566 during the previous year.

### Year-Over-Year Growth

Over the last 12 months, Ontario's population grew by 168,408 or 1.2%, higher than growth of 113,959 during the previous year. Among the provinces, Alberta and Manitoba had the highest population growth rates (1.8% and 1.5% respectively). Canada's population growth rate over the period was 1.1%.

For more information contact Alex Munger (416) 325-0102.

# ONTARIO DEMOGRAPHIC FACTSHEET

	Estimates <sup>1</sup>							MOF Projections <sup>2</sup>					
	2001	2006	2011	2012	2013	2014	2015	2016	2021	2026	2031	2036	2041
<b>POPULATION (000s)</b>													
Canada	31,021	32,571	34,343	34,751	35,155	35,544	35,852	36,229	37,998	39,727	41,373	42,903	44,353
Ontario	11,897	12,662	13,264	13,410	13,551	13,678	13,792	13,960	14,788	15,614	16,428	17,205	17,949
Ontario as % of Canada	38.4	38.9	38.6	38.6	38.5	38.5	38.5	38.5	38.9	39.3	39.7	40.1	40.5
Ontario Ave. Annual Growth Rate (Over previous year shown)	1.4	1.3	0.9	1.1	1.1	0.9	0.8	1.2	1.2	1.1	1.0	0.9	0.8
<b>AGE DISTRIBUTION (%)</b>													
0-4	5.9	5.5	5.4	5.3	5.3	5.2	5.2	5.2	5.3	5.3	5.1	4.9	4.8
5-14	13.5	12.3	11.2	11.0	10.9	10.8	10.7	10.6	10.4	10.4	10.6	10.4	10.1
15-24	13.4	13.8	13.7	13.7	13.6	13.4	13.2	13.0	11.7	11.2	11.1	11.2	11.5
25-44	31.6	29.4	27.1	27.0	26.8	26.7	26.7	26.7	27.0	26.7	25.8	24.8	23.9
45-64	23.2	26.0	28.4	28.3	28.2	28.2	28.1	28.0	26.8	25.1	23.8	23.9	24.4
65-74	7.0	6.9	7.6	8.0	8.4	8.7	9.0	9.2	10.5	11.5	12.1	11.4	10.3
75+	5.5	6.2	6.6	6.7	6.8	6.9	7.1	7.2	8.2	9.8	11.5	13.4	15.0
<b>SELECTED AGE GROUPS (%)</b>													
0-14	19.4	17.8	16.6	16.4	16.2	16.0	15.9	15.8	15.8	15.7	15.7	15.3	14.9
15-64	68.1	69.2	69.1	68.9	68.6	68.4	68.1	67.7	65.6	63.0	60.7	59.9	59.8
65+	12.5	13.0	14.2	14.7	15.2	15.6	16.0	16.4	18.7	21.3	23.6	24.7	25.3
<b>OTHER CHARACTERISTICS</b>													
Total Dependency Ratio (%) <sup>3</sup>	63.0	60.6	60.3	60.6	60.9	61.2	61.5	61.8	66.4	73.7	80.5	83.7	84.2
Median Age (yrs.)	36.7	38.4	39.8	40.0	40.2	40.4	40.6	40.8	41.4	42.2	43.0	44.0	44.8
Age Span of Baby Boom (yrs.)	36-55	41-60	46-65	47-66	48-67	49-68	50-69	51-70	56-75	61-80	66-85	71-90	76-95
Total Fertility Rate <sup>4</sup>	1.53	1.55	1.55	n.a.	n.a.	n.a.	n.a.	1.57	1.58	1.59	1.60	1.60	1.60
Female Life Expectancy at Birth (yrs.) <sup>4</sup>	82.1	83.1	n.a.	n.a.	n.a.	n.a.	n.a.	84.9	85.7	86.5	87.3	88.0	88.7
Male Life Expectancy at Birth (yrs.) <sup>4</sup>	77.5	78.8	n.a.	n.a.	n.a.	n.a.	n.a.	81.2	82.4	83.5	84.6	85.6	86.6
Families (000s) <sup>5</sup>	3,191	3,422	3,612	n.a.	n.a.	n.a.	n.a.	n.a.	n.a.	n.a.	n.a.	n.a.	n.a.
Households (000s) <sup>5</sup>	4,219	4,555	4,888	n.a.	n.a.	n.a.	n.a.	n.a.	n.a.	n.a.	n.a.	n.a.	n.a.
<b>REGIONAL DISTRIBUTION (%)</b>													
GTA	44.5	45.8	47.2	47.4	47.7	47.9	48.0	48.3	49.3	50.2	51.1	52.0	52.7
Central	22.1	22.0	21.6	21.5	21.5	21.5	21.4	21.4	21.2	21.0	20.8	20.7	20.5
Eastern	13.5	13.2	13.2	13.2	13.1	13.1	13.1	13.0	12.9	12.8	12.7	12.6	12.4
Southwestern	13.0	12.6	12.0	11.9	11.8	11.7	11.7	11.6	11.2	10.9	10.5	10.2	9.9
Northeastern	4.8	4.5	4.3	4.2	4.2	4.1	4.1	4.0	3.8	3.5	3.3	3.2	3.0
Northwestern	2.1	1.9	1.8	1.8	1.8	1.8	1.7	1.7	1.6	1.6	1.5	1.4	1.3

## COMPONENTS OF CHANGE (000s)<sup>6</sup> – Year Beginning July 1<sup>st</sup>

Period	Population, Beginning of Period	Total Change	Births	Deaths	Natural Increase	International Migration			Interprovincial Migration			
						Immig.	Net Emig.	Net NPRs	Net	In	Out	Net
<b>Five-Year</b>												
2001-06	11,897	764	658	418	240	653	118	44	579	307	336	-30
2006-11	12,662	602	697	441	256	558	89	57	525	296	355	-59
<b>Annual</b>												
2011-12	13,264	146	140	90	50	101	17	23	107	60	71	-11
2012-13	13,410	141	141	93	48	106	16	17	108	55	69	-14
2013-14	13,551	127	143	97	46	102	16	9	95	57	72	-15
2014-15	13,678	114	144	100	44	89	16	6	79	62	70	-9

1. Statistics Canada's population estimates, based on the 2011 Census.

2. Except for Canada, projections are produced by the Ontario Ministry of Finance (Spring 2016). Projections for Canada are from Statistics Canada (based on 2011 Census).

3. Total dependency ratio is the ratio of the population aged 0-19 and 65+ to the population aged 20-64.

4. Total Fertility Rates and life expectancy estimates are for calendar year, and projections are for census year. Life expectancy estimates for years after 2006 represent three-year averages (e.g., 2006 reported life expectancy corresponds to the average recorded over 2005-2007).

5. Families and households are Census data.

6. In the "Components of Change" table, flows are for the 12-month period July 1 to June 30. Net international migration is calculated as the net balance of immigrants, net emigrants and net non-permanent residents (NPRs). Components may not add up due to existence of residuals.

Note: All population figures are for July 1<sup>st</sup>.

Sources: Ontario Ministry of Finance and Statistics Canada.