

## Highlights of Fourth Quarter 2016

March 23, 2017

### Population Growth

Ontario's population reached 14,094,167 on January 1, 2017, with an increase of 30,911 people in the fourth quarter of 2016. This compares to an increase of 21,053 in the same quarter of the previous year.

Population Growth, Ontario, 4 <sup>th</sup> Quarter, 2016	
(Thousands)	
Population, October 1, 2016	14,063.3
Plus Births	36.8
Minus Deaths	27.7
Plus Immigrants	21.8
Minus Emigrants*	5.2
Plus Net Change in Non-Permanent Residents	1.2
Plus Interprovincial Arrivals	13.4
Minus Interprovincial Departures	9.4
<b>Population, January 1, 2017</b>	<b>14,094.2</b>

\* Emigrants plus net change in temporary emigrants minus returning Canadians.  
Source: Statistics Canada.

### Births and Deaths

There were 36,800 births and 27,731 deaths during the fourth quarter of 2016, representing increases of 2.1% and 3.5% respectively from the same quarter of 2015.

Natural increase (births minus deaths) was 9,069 in the quarter, down from 9,224 in the same quarter of 2015.

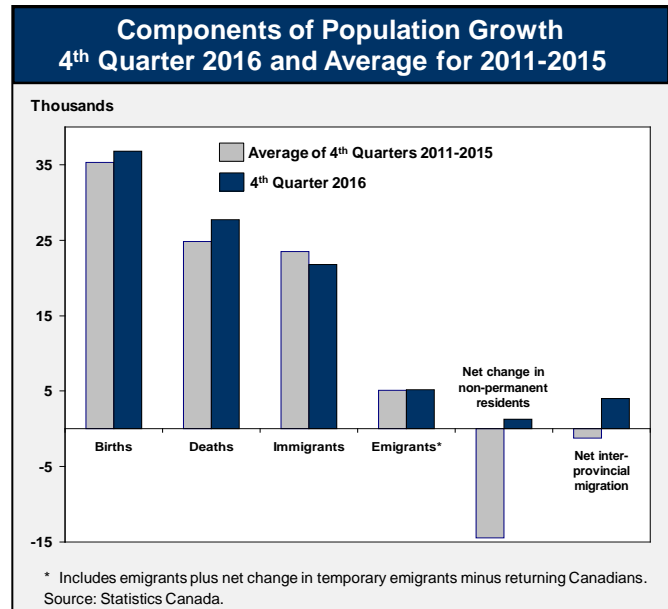
### International Migration

Immigration to Ontario was 21,809 in the fourth quarter of 2016, down 17.7% from the same quarter of the previous year. Ontario received 39.1% of all immigrants to Canada in the quarter, up from 38.0% in the same quarter of 2015. Over the last 12 months Ontario received 110,058 immigrants, up from 103,655 during the previous year.

There were 5,194 emigrants from Ontario in the quarter, similar to the same quarter of the previous year. Ontario accounted for 39.8% of all emigration from Canada in the quarter.

The number of non-permanent residents in Ontario (NPRs – i.e. foreign students, visa workers, refugee claimants) increased by 1,244 to 379,226 in the fourth quarter.

In summary, there was a net international migration gain of 17,859 in the fourth quarter, up from a net gain of 10,965 in the same quarter of 2015.



### Interprovincial Migration

In the fourth quarter of 2016, Ontario had a net inflow of 3,983 people from other provinces and territories compared to a net gain of 864 people in the same quarter of 2015. Ontario experienced net gains in its exchanges with nine of the 12 other provinces and territories, with the largest net gains coming from Quebec (1,983) and Alberta (783). Over the last 12 months, Ontario's total net interprovincial migration gain was 19,822 compared to a net loss of 3,304 during the previous year.

### Year-Over-Year Growth

Over the last 12 months, Ontario's population grew by 218,893 or 1.6%, higher than growth of 138,936 during the previous year. Among the provinces, only Manitoba (1.7%) had a faster population growth rate than Ontario. Canada's population grew at a rate of 1.3% over the period.

For more information contact Alex Munger (416) 325-0102.

# ONTARIO DEMOGRAPHIC FACTSHEET

	Estimates <sup>1</sup>								MOF Projections <sup>2</sup>				
	2001	2006	2011	2012	2013	2014	2015	2016	2021	2026	2031	2036	2041
<b>POPULATION (000s)</b>													
<b>Canada</b>	31,021	32,571	34,343	34,751	35,155	35,545	35,847	36,286	37,998	39,727	41,373	42,903	44,353
<b>Ontario</b>	11,897	12,662	13,264	13,414	13,556	13,685	13,797	13,983	14,788	15,614	16,428	17,205	17,949
Ontario as % of Canada	38.4	38.9	38.6	38.6	38.6	38.5	38.5	38.5	38.9	39.3	39.7	40.1	40.5
Ontario Ave. Annual Growth Rate (Over previous year shown)	1.4	1.3	0.9	1.1	1.1	1.0	0.8	1.3	1.1	1.1	1.0	0.9	0.8
<b>AGE DISTRIBUTION (%)</b>													
0-4	5.9	5.5	5.4	5.3	5.3	5.2	5.2	5.2	5.3	5.3	5.1	4.9	4.8
5-14	13.5	12.3	11.2	11.0	10.9	10.8	10.7	10.6	10.4	10.4	10.6	10.4	10.1
15-24	13.4	13.8	13.7	13.7	13.6	13.4	13.2	13.1	11.7	11.2	11.1	11.2	11.5
25-44	31.6	29.4	27.1	27.0	26.8	26.7	26.7	26.7	27.0	26.7	25.8	24.8	23.9
45-64	23.2	26.0	28.4	28.3	28.2	28.2	28.1	28.0	26.8	25.1	23.8	23.9	24.4
65-74	7.0	6.9	7.6	8.0	8.4	8.7	9.0	9.2	10.5	11.5	12.1	11.4	10.3
75+	5.5	6.2	6.6	6.7	6.8	6.9	7.1	7.2	8.2	9.8	11.5	13.4	15.0
<b>SELECTED AGE GROUPS (%)</b>													
0-14	19.4	17.8	16.6	16.4	16.2	16.0	15.9	15.9	15.8	15.7	15.7	15.3	14.9
15-64	68.1	69.2	69.1	68.9	68.6	68.3	68.0	67.8	65.6	63.0	60.7	59.9	59.8
65+	12.5	13.0	14.2	14.7	15.2	15.6	16.0	16.4	18.7	21.3	23.6	24.7	25.3
<b>OTHER CHARACTERISTICS</b>													
Total Dependency Ratio (%) <sup>3</sup>	63.0	60.6	60.3	60.6	60.9	61.2	61.6	61.8	66.4	73.7	80.5	83.7	84.2
Median Age (yrs.)	36.7	38.4	39.8	40.0	40.2	40.4	40.6	40.6	41.4	42.2	43.0	44.0	44.8
Age Span of Baby Boom (yrs.)	36-55	41-60	46-65	47-66	48-67	49-68	50-69	51-70	56-75	61-80	66-85	71-90	76-95
Total Fertility Rate <sup>4</sup>	1.53	1.55	1.55	n.a.	n.a.	n.a.	n.a.	n.a.	1.58	1.59	1.60	1.60	1.60
Female Life Expectancy at Birth (yrs.) <sup>4</sup>	82.1	83.1	84.0	n.a.	n.a.	n.a.	n.a.	n.a.	85.7	86.5	87.3	88.0	88.7
Male Life Expectancy at Birth (yrs.) <sup>4</sup>	77.5	78.8	79.8	n.a.	n.a.	n.a.	n.a.	n.a.	82.4	83.5	84.6	85.6	86.6
Families (000s)	3,257	3,539	3,723	3,750	3,789	3,828	3,860	3,897	n.a.	n.a.	n.a.	n.a.	n.a.
Households (000s) <sup>5</sup>	4,219	4,555	4,888	n.a.	n.a.	n.a.	n.a.	n.a.	n.a.	n.a.	n.a.	n.a.	n.a.
<b>REGIONAL DISTRIBUTION (%)</b>													
GTA	44.5	45.8	47.2	47.4	47.7	47.9	48.0	48.3	49.3	50.2	51.1	52.0	52.7
Central	22.1	22.0	21.6	21.5	21.5	21.5	21.4	21.4	21.2	21.0	20.8	20.7	20.5
Eastern	13.5	13.2	13.2	13.2	13.1	13.1	13.1	13.0	12.9	12.8	12.7	12.6	12.4
Southwestern	13.0	12.6	12.0	11.9	11.8	11.7	11.7	11.6	11.2	10.9	10.5	10.2	9.9
Northeastern	4.8	4.5	4.3	4.2	4.2	4.1	4.1	4.0	3.8	3.5	3.3	3.2	3.0
Northwestern	2.1	1.9	1.8	1.8	1.8	1.8	1.7	1.7	1.6	1.6	1.5	1.4	1.3

**COMPONENTS OF CHANGE (000s)<sup>6</sup> - Year Beginning July 1<sup>st</sup>**

Period	Population, Beginning of Period	Total Change	Births	Deaths	Natural Increase	International Migration			Interprovincial Migration			
						Immig.	Net Emig.	Net NPRs	Net	In	Out	Net
<b>Five-Year</b>												
2006-11	12,662	602	697	441	256	558	89	57	525	296	355	-59
2011-16	13,264	719	720	479	241	518	88	89	520	307	348	-42
<b>Annual</b>												
2011-12	13,264	150	141	88	53	101	17	24	108	60	71	-11
2012-13	13,414	143	142	92	50	106	17	17	107	55	69	-14
2013-14	13,556	129	144	96	48	102	18	11	95	57	72	-15
2014-15	13,685	112	146	99	46	90	18	3	74	63	72	-9
2015-16	13,797	186	147	103	45	120	18	34	135	71	65	6

1. Statistics Canada's population estimates, based on the 2011 Census.  
 2. Except for Canada, projections are produced by the Ontario Ministry of Finance (Spring 2016). Projections for Canada are from Statistics Canada (based on 2011 Census).  
 3. Total dependency ratio is the ratio of the population aged 0-19 and 65+ to the population aged 20-64.  
 4. Total Fertility Rates and life expectancy estimates are for calendar year, and projections are for census year. Life expectancy estimates for years after 2006 represent three-year averages (e.g., 2006 reported life expectancy corresponds to the average recorded over 2005-2007).  
 5. Households are Census data.  
 6. In the "Components of Change" table, flows are for the 12-month period July 1 to June 30. Net international migration is calculated as the net balance of immigrants, net emigrants and net non-permanent residents (NPRs). Components may not add up due to existence of residuals.

Note: All population figures are for July 1<sup>st</sup>.  
 Sources: Ontario Ministry of Finance and Statistics Canada.