

Highlights of First Quarter 2017

June 15, 2017

Population Growth

Ontario's population reached 14,135,610 on April 1, 2017, with an increase of 41,443 people in the first quarter of 2017. This compares to an increase of 48,172 in the same quarter of the previous year.

Population Growth, Ontario, 1 st Quarter, 2017	
(Thousands)	
Population, January 1, 2017	14,094.2
Plus Births	36.4
Minus Deaths	27.8
Plus Immigrants	25.3
Minus Emigrants*	5.9
Plus Net Change in Non-Permanent Residents	10.7
Plus Interprovincial Arrivals	18.7
Minus Interprovincial Departures	16.0
Population, April 1, 2017	14,135.6

* Emigrants plus net change in temporary emigrants minus returning Canadians.
Source: Statistics Canada.

Births and Deaths

There were 36,437 births and 27,781 deaths during the first quarter of 2017, representing increases of 2.3% and 3.4% respectively from the same quarter of 2016.

Natural increase (births minus deaths) was 8,656 in the quarter, down from 8,770 in the same quarter of 2016.

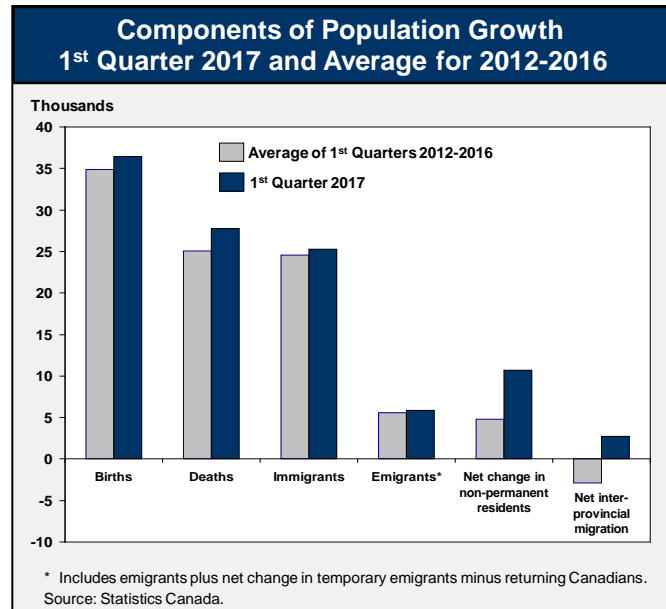
International Migration

Immigration to Ontario was 25,266 in the first quarter of 2017, down from 31,895 in the same quarter of the previous year. Ontario received 34.7% of all immigrants to Canada in the quarter, down from 37.0% in the same quarter of 2016. Over the last 12 months Ontario received 103,429 immigrants, down from 115,773 during the previous year.

There were 5,865 emigrants from Ontario in the quarter, similar to the same quarter of the previous year. Ontario accounted for 42.9% of all emigration from Canada in the quarter.

The number of non-permanent residents in Ontario (NPRs – i.e. foreign students, visa workers, refugee claimants) increased by 10,684 to 389,910 in the first quarter.

In summary, there was a net international migration gain of 30,085 in the first quarter, down from a net gain of 38,466 in the same quarter of 2016.



Interprovincial Migration

In the first quarter of 2017, Ontario had a net inflow of 2,702 people from other provinces and territories compared to a net gain of 936 people in the same quarter of 2016. Ontario experienced net gains in its exchanges with eight of the 12 other provinces and territories, with the largest net gains coming from Quebec (938) and Alberta (698). The largest net losses in the quarter were with British Columbia (276) and Nunavut (34). Over the last 12 months, Ontario's total net interprovincial migration gain was 21,588 compared to a net gain of 907 during the previous year.

Year-Over-Year Growth

Over the last 12 months, Ontario's population grew by 212,164 or 1.5%, higher than growth of 167,749 during the previous year. Among the provinces, only Manitoba (1.6%) had a faster population growth rate than Ontario. Canada's population grew at a rate of 1.2% over the period.

For more information contact Alex Munger (416) 325-0102.

ONTARIO DEMOGRAPHIC FACTSHEET

Ministry of Finance

Page 2

	Estimates ¹								MOF Projections ²				
	2001	2006	2011	2012	2013	2014	2015	2016	2021	2026	2031	2036	2041
POPULATION (000s)													
Canada	31,021	32,571	34,343	34,751	35,155	35,545	35,847	36,286	37,998	39,727	41,373	42,903	44,353
Ontario	11,897	12,662	13,264	13,414	13,556	13,685	13,797	13,983	14,980	15,823	16,659	17,458	18,222
Ontario as % of Canada	38.4	38.9	38.6	38.6	38.6	38.5	38.5	38.5	39.4	39.8	40.3	40.7	41.1
Ontario Ave. Annual Growth Rate (Over previous year shown)	1.4	1.3	0.9	1.1	1.1	1.0	0.8	1.3	1.4	1.1	1.0	0.9	0.9
AGE DISTRIBUTION (%)													
0-4	5.9	5.5	5.4	5.3	5.3	5.2	5.2	5.2	5.3	5.4	5.2	4.9	4.8
5-14	13.5	12.3	11.2	11.0	10.9	10.8	10.7	10.6	10.4	10.4	10.5	10.5	10.2
15-24	13.4	13.8	13.7	13.7	13.6	13.4	13.2	13.1	12.0	11.5	11.4	11.5	11.7
25-44	31.6	29.4	27.1	27.0	26.8	26.7	26.7	26.7	27.3	27.0	26.0	25.1	24.1
45-64	23.2	26.0	28.4	28.3	28.2	28.2	28.1	28.0	26.6	24.8	23.5	23.6	24.2
65-74	7.0	6.9	7.6	8.0	8.4	8.7	9.0	9.2	10.4	11.4	12.0	11.2	10.2
75+	5.5	6.2	6.6	6.7	6.8	6.9	7.1	7.2	8.0	9.6	11.3	13.2	14.9
SELECTED AGE GROUPS (%)													
0-14	19.4	17.8	16.6	16.4	16.2	16.0	15.9	15.9	15.7	15.7	15.7	15.4	14.9
15-64	68.1	69.2	69.1	68.9	68.6	68.3	68.0	67.8	65.9	63.3	61.0	60.1	60.1
65+	12.5	13.0	14.2	14.7	15.2	15.6	16.0	16.4	18.4	21.0	23.3	24.5	25.0
OTHER CHARACTERISTICS													
Total Dependency Ratio (%) ³	63.0	60.6	60.3	60.6	60.9	61.2	61.6	61.8	65.7	73.0	79.9	83.2	83.7
Median Age (yrs.)	36.7	38.4	39.8	40.0	40.2	40.4	40.6	40.6	41.0	41.8	42.6	43.6	44.4
Age Span of Baby Boom (yrs.)	36-55	41-60	46-65	47-66	48-67	49-68	50-69	51-70	56-75	61-80	66-85	71-90	76-95
Total Fertility Rate ⁴	1.53	1.55	1.55	n.a.	n.a.	n.a.	n.a.	n.a.	1.56	1.58	1.59	1.60	1.60
Female Life Expectancy at Birth (yrs.) ⁴	82.1	83.1	84.0	n.a.	n.a.	n.a.	n.a.	n.a.	85.8	86.5	87.3	88.0	88.7
Male Life Expectancy at Birth (yrs.) ⁴	77.5	78.8	79.8	n.a.	n.a.	n.a.	n.a.	n.a.	82.4	83.5	84.6	85.6	86.6
Families (000s)	3,257	3,539	3,723	3,750	3,789	3,828	3,860	3,897	n.a.	n.a.	n.a.	n.a.	n.a.
Households (000s) ⁵	4,219	4,555	4,888	n.a.	n.a.	n.a.	n.a.	n.a.	n.a.	n.a.	n.a.	n.a.	n.a.
REGIONAL DISTRIBUTION (%)													
GTA	44.5	45.8	47.2	47.4	47.7	47.9	48.0	48.3	49.3	50.2	51.1	51.9	52.7
Central	22.1	22.0	21.6	21.5	21.5	21.5	21.4	21.4	21.2	21.0	20.9	20.7	20.6
Eastern	13.5	13.2	13.2	13.2	13.1	13.1	13.1	13.0	12.9	12.8	12.6	12.5	12.3
Southwestern	13.0	12.6	12.0	11.9	11.8	11.7	11.7	11.6	11.2	10.9	10.6	10.3	10.1
Northeastern	4.8	4.5	4.3	4.2	4.2	4.1	4.1	4.0	3.7	3.5	3.3	3.1	3.0
Northwestern	2.1	1.9	1.8	1.8	1.8	1.8	1.7	1.7	1.6	1.5	1.5	1.4	1.3

COMPONENTS OF CHANGE (000s)⁶ - Year Beginning July 1st

Period	Population, Beginning of Period	Total Change	Births	Deaths	Natural Increase	International Migration			Interprovincial Migration			
						Immig.	Net Emig.	Net NPRs	Net	In	Out	Net
Five-Year												
2006-11	12,662	602	697	441	256	558	89	57	525	296	355	-59
2011-16	13,264	719	720	479	241	518	88	89	520	307	348	-42
Annual												
2011-12	13,264	150	141	88	53	101	17	24	108	60	71	-11
2012-13	13,414	143	142	92	50	106	17	17	107	55	69	-14
2013-14	13,556	129	144	96	48	102	18	11	95	57	72	-15
2014-15	13,685	112	146	99	46	90	18	3	74	63	72	-9
2015-16	13,797	186	147	103	45	120	18	34	135	71	65	6

1. Statistics Canada's population estimates, based on the 2011 Census.

2. Except for Canada, projections are produced by the Ontario Ministry of Finance (Spring 2017). Projections for Canada are from Statistics Canada (based on 2011 Census).

3. Total dependency ratio is the ratio of the population aged 0-19 and 65+ to the population aged 20-64.

4. Total Fertility Rates and life expectancy estimates are for calendar year, and projections are for census year. Life expectancy estimates for years after 2006 represent three-year averages (e.g., 2006 reported life expectancy corresponds to the average recorded over 2005-2007).

5. Households are Census data.

6. In the "Components of Change" table, flows are for the 12-month period July 1 to June 30. Net international migration is calculated as the net balance of immigrants, net emigrants and net non-permanent residents (NPRs). Components may not add up due to existence of residuals.

Note: All population figures are for July 1st.

Sources: Ontario Ministry of Finance and Statistics Canada.

June 15, 2017

Office of Economic Policy
Labour Economics Branch