

## Highlights of Fourth Quarter 2017

March 22, 2018

### Population Growth

Ontario's population reached 14,318,750 on January 1, 2018, with an increase of 39,554 people during the fourth quarter of 2017. This compares to an increase of 31,139 in the same quarter of the previous year.

Population Growth, Ontario, 4 <sup>th</sup> Quarter, 2017	
(Thousands)	
Population, October 1, 2017	14,279.2
Plus Births	36.6
Minus Deaths	27.6
Plus Immigrants	31.4
Minus Emigrants*	4.7
Plus Net Change in Non-Permanent Residents	-0.6
Plus Interprovincial Arrivals	15.3
Minus Interprovincial Departures	11.0
<b>Population, January 1, 2018</b>	<b>14,318.8</b>

\* Emigrants plus net change in temporary emigrants minus returning Canadians.  
Source: Statistics Canada.

### Births and Deaths

There were 36,634 births and 27,563 deaths during the fourth quarter of 2017, representing increases of 2.2% and 3.3% respectively from the same quarter of 2017.

Natural increase (births minus deaths) was 9,071 in the quarter, down slightly from 9,160 in the same quarter of 2017.

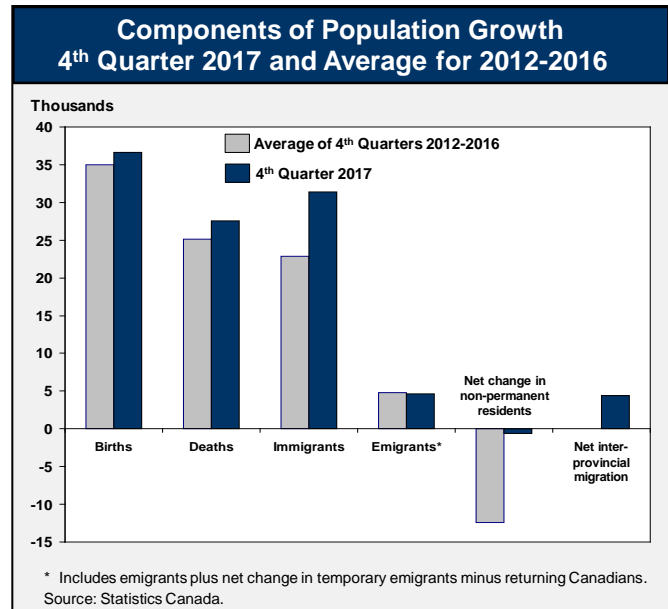
### International Migration

Immigration to Ontario was 31,390 in the fourth quarter of 2017, up from 21,127 in the same quarter of the previous year. Ontario received 47.9% of all immigrants to Canada in the quarter, up from 39.4% in the same quarter of 2016. Over the last 12 months Ontario received 111,955 immigrants, up from 110,054 during the previous year.

There were 4,671 emigrants from Ontario in the quarter, similar to the same quarter of the previous year. Ontario accounted for 37.1% of all emigration from Canada in the quarter.

The number of non-permanent residents in Ontario (NPRs – i.e. foreign students, visa workers, refugee claimants) decreased by 612 to 453,943 in the fourth quarter.

In summary, there was a net international migration gain of 26,107 in the fourth quarter, up from a net gain of 17,967 in the same quarter of 2016.



### Interprovincial Migration

In the fourth quarter of 2017, Ontario had a net inflow of 4,376 people from other provinces and territories compared to a net gain of 4,012 people in the same quarter of 2016. Ontario experienced net gains in its exchanges with all other provinces and territories, with the largest gains coming from Quebec (1,137) and Manitoba (736). Over the last 12 months, Ontario's total net interprovincial migration gain was 22,143 compared to a net gain of 21,569 during the previous year.

### Year-Over-Year Growth

Over the last 12 months, Ontario's population grew by 233,953 or 1.7%, higher than growth of 216,727 during the previous year. Among the provinces, Ontario and Prince Edward Island (also 1.7%) had the fastest population growth rates. Canada's population grew at a rate of 1.3% over the period.

For more information contact Alex Munger (416) 325-0102.

# ONTARIO DEMOGRAPHIC FACTSHEET

Ministry of Finance

Page 2

	Estimates <sup>1</sup>								MOF Projections <sup>2</sup>				
	2001	2006	2011	2013	2014	2015	2016	2017	2021	2026	2031	2036	2041
<b>POPULATION (000s)</b>													
<b>Canada</b>	31,021	32,571	34,343	35,152	35,535	35,833	36,265	36,708	37,998	39,727	41,373	42,903	44,353
<b>Ontario</b>	11,897	12,662	13,264	13,556	13,680	13,790	13,976	14,193	14,980	15,823	16,659	17,458	18,222
Ontario as % of Canada	38.4	38.9	38.6	38.6	38.5	38.5	38.5	38.7	39.4	39.8	40.3	40.7	41.1
Ontario Ave. Annual Growth Rate (Over previous year shown)	1.4	1.3	0.9	1.1	0.9	0.8	1.4	1.6	1.4	1.1	1.0	0.9	0.9
<b>AGE DISTRIBUTION (%)</b>													
0-4	5.9	5.5	5.4	5.3	5.2	5.2	5.2	5.1	5.3	5.4	5.2	4.9	4.8
5-14	13.5	12.3	11.2	10.9	10.8	10.7	10.7	10.6	10.4	10.4	10.5	10.5	10.2
15-24	13.4	13.8	13.7	13.6	13.4	13.2	13.1	13.0	12.0	11.5	11.4	11.5	11.7
25-44	31.6	29.4	27.1	26.8	26.7	26.7	26.8	26.9	27.3	27.0	26.0	25.1	24.1
45-64	23.2	26.0	28.4	28.2	28.2	28.1	28.0	27.7	26.6	24.8	23.5	23.6	24.2
65-74	7.0	6.9	7.6	8.4	8.7	9.0	9.2	9.4	10.4	11.4	12.0	11.2	10.2
75+	5.5	6.2	6.6	6.8	7.0	7.1	7.2	7.3	8.0	9.6	11.3	13.2	14.9
<b>SELECTED AGE GROUPS (%)</b>													
0-14	19.4	17.8	16.6	16.2	16.0	15.9	15.8	15.7	15.7	15.7	15.7	15.4	14.9
15-64	68.1	69.2	69.1	68.6	68.3	68.1	67.8	67.6	65.9	63.3	61.0	60.1	60.1
65+	12.5	13.0	14.2	15.2	15.6	16.1	16.4	16.7	18.4	21.0	23.3	24.5	25.0
<b>OTHER CHARACTERISTICS</b>													
Total Dependency Ratio (%) <sup>3</sup>	63.0	60.6	60.3	60.9	61.2	61.5	61.7	62.0	65.7	73.0	79.9	83.2	83.7
Median Age (yrs.)	36.7	38.4	39.8	40.2	40.4	40.6	40.7	40.6	41.0	41.8	42.6	43.6	44.4
Age Span of Baby Boom (yrs.)	36-55	41-60	46-65	48-67	49-68	50-69	51-70	52-71	56-75	61-80	66-85	71-90	76-95
Total Fertility Rate <sup>4</sup>	1.53	1.55	1.55	1.51	1.50	n.a.	n.a.	n.a.	1.56	1.58	1.59	1.60	1.60
Female Life Expectancy at Birth (yrs.) <sup>4</sup>	82.1	83.1	84.0	84.3	84.4	n.a.	n.a.	n.a.	85.8	86.5	87.3	88.0	88.7
Male Life Expectancy at Birth (yrs.) <sup>4</sup>	77.5	78.8	79.8	80.2	80.4	n.a.	n.a.	n.a.	82.4	83.5	84.6	85.6	86.6
Families (000s)	3,257	3,539	3,723	3,790	3,828	3,862	3,900	3,937	n.a.	n.a.	n.a.	n.a.	n.a.
Households (000s) <sup>5</sup>	4,219	4,555	4,888	n.a.	n.a.	n.a.	5,169	n.a.	n.a.	n.a.	n.a.	n.a.	n.a.
<b>REGIONAL DISTRIBUTION (%)</b>													
GTA	44.5	45.8	47.2	47.7	47.9	48.0	48.3	48.3	49.3	50.2	51.1	51.9	52.7
Central	22.1	22.0	21.6	21.5	21.4	21.5	21.4	21.4	21.2	21.0	20.9	20.7	20.6
Eastern	13.5	13.2	13.2	13.1	13.1	13.1	13.0	13.0	12.9	12.8	12.6	12.5	12.3
Southwestern	13.0	12.6	12.0	11.8	11.7	11.7	11.6	11.6	11.2	10.9	10.6	10.3	10.1
Northeastern	4.8	4.5	4.3	4.2	4.1	4.1	4.0	3.9	3.7	3.5	3.3	3.1	3.0
Northwestern	2.1	1.9	1.8	1.8	1.8	1.7	1.7	1.7	1.6	1.5	1.5	1.4	1.3

## COMPONENTS OF CHANGE (000s)<sup>6</sup> - Year Beginning July 1<sup>st</sup>

Period	Population, Beginning of Period	Total Change	Births	Deaths	Natural Increase	International Migration			Interprovincial Migration			
						Immig.	Net Emig.	Net NPRs	Net	In	Out	Net
<b>Five-Year</b>												
2006-11	12,662	602	697	441	256	558	89	57	525	296	355	-59
2011-16	13,264	713	708	477	231	519	88	89	521	307	346	-39
<b>Annual</b>												
2012-13	13,414	142	141	93	48	106	16	19	108	55	69	-14
2013-14	13,556	125	141	95	45	102	19	11	94	57	72	-15
2014-15	13,680	109	142	98	43	90	18	2	74	63	72	-9
2015-16	13,790	187	144	102	42	120	18	33	136	72	63	9
2016-17	13,976	217	147	105	41	98	18	69	150	84	58	26

1. Statistics Canada's population estimates, based on the 2011 Census.

2. Except for Canada, projections are produced by the Ontario Ministry of Finance (Spring 2017). Projections for Canada are from Statistics Canada (based on 2011 Census).

3. Total dependency ratio is the ratio of the population aged 0-19 and 65+ to the population aged 20-64.

4. Total Fertility Rates and life expectancy estimates are for calendar year, and projections are for census year. Life expectancy estimates for years after 2006 represent three-year averages (e.g., 2006 reported life expectancy corresponds to the average recorded over 2005-2007).

5. Households are Census data.

6. In the "Components of Change" table, flows are for the 12-month period July 1 to June 30. Net international migration is calculated as the net balance of immigrants, net emigrants and net non-permanent residents (NPRs). Components may not add up due to existence of residuals.

Note: All population figures are for July 1<sup>st</sup>.

Sources: Ontario Ministry of Finance and Statistics Canada.

March 22, 2018

Office of Economic Policy  
Labour Economics Branch